

# Slate way



## Carácter y personalidad Character and personality Caractère et personnalité



En colaboración con  
In collaboration with  
En collaboration avec



**Jaime Sanahuja**

En Sanahuja&partners trabajan para crear ambientes que transmiten ganas de estar. Una arquitectura que resalta la autenticidad y es un tributo al origen, resaltando los recursos que la tradición mediterránea nos han dejado en herencia: una visión diferente que se traslada a todos sus proyectos. Siguiendo con la filosofía de los materiales naturales, Jaime Sanahuja ha colaborado con el diseño de la serie Slate Way; un homenaje a la piedra brasileña que aporta carácter y personalidad a cualquier estancia.

At Sanahuja&partners they work to create environments that transmit the desire to be. An architecture that highlights authenticity and pays tribute to the origin, highlighting the resources that the Mediterranean tradition has left us as an inheritance: a different vision that is transferred to all their projects. Following the philosophy of natural materials, Jaime Sanahuja has collaborated with the design of the Slate Way series; a tribute to Brazilian stone that brings character and personality to any room.

Sanahuja & partners travaillent pour créer des atmosphères chaleureuses qui invitent au bien-être. Une architecture qui met en valeur l'authenticité et rend hommage aux origines, tout en soulignant l'héritage méditerranéen. Une vision différente que transmet tous ses projets. Conformément à la philosophie des matériaux naturels, Jaime Sanahuja a collaboré au design de la série Slate Way; un hommage à la pierre brésilienne qui apporte caractère et personnalité à n'importe quelle pièce.



Pvto. / Floor / Sol: Oldmanor Arena 25x150 / Slate Way Ocean 15x15



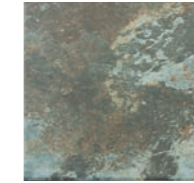
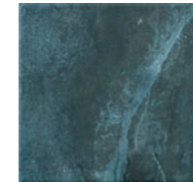
7x28  
2,75"x11,02"

15x15  
5,90"x5,90"

COMPACGLASS  
GRES PORCELÁNICO ESMALTADO  
GLAZED PORCELAIN TILES  
GRÈS CÉRAME ÉMAILLÉ



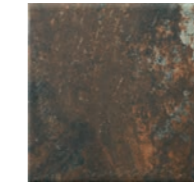
Slate Way Ocean



Slate Way Green



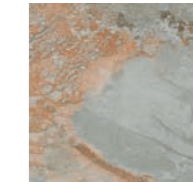
Slate Way Brown



Slate Way Pearl



Slate Way Ash



Slate Way Ocean



Slate Way Green



Slate Way Brown



Slate Way Pearl



Slate Way Ash

Disponibile / Available / Disponible:  
Porcelánico / Porcelain / Grès cérame - UNIVERSE

# Códigos de producto Product codes / Codes des produits

7,5x15

## Subway



7,5x15	9 mm
Bco. Brillo M115 028.030.0063.11923	GLO
Bco. Mate M115 028.030.0174.11923	MAT
Negro M115 028.030.0003.11923	GLO
Negro Mate M115 028.030.1011.11923	MAT
Plata Mate P07 028.748.0438.11923	MAT

7,5x15	11 mm
Plata Brillo P07 028.748.1072.11923	GLO
Oro Mate P09 028.748.0439.11923	MAT
Oro Brillo P09 028.748.1071.11923	GLO

6,5x20

## Mayfair



6,5x20	9,5 mm
Beige M90 015.511.0007.01955	GLO
Blanco Mate M90 015.511.0174.01955	MAT
Blanco M90 015.511.0012.01955	GLO
Grafito M90 015.511.0068.01955	GLO
Grana M90 015.511.0021.01955	GLO
Gris M90 015.511.0002.01955	GLO
Navi M90 015.511.0118.01955	GLO

6,5x20	9,5 mm
Negro M90 015.511.0003.01955	GLO
Negro Mate M90 015.511.1011.01955	MAT
Ocre M90 015.511.0052.01955	GLO
Perla M90 015.511.0037.01955	GLO
Tortora M90 015.511.0297.01955	GLO
Vert M90 015.511.0543.01955	GLO

7,5x30

## Aurea



7,5x30	10 mm
Brass M70 027.890.1013.02463	MAT
Bronze M70 027.890.0815.02463	MAT
Gold M70 027.890.0189.02463	MAT
Gold Rose M70 027.890.1012.02463	MAT
Silver M70 027.890.0183.02463	MAT

## Aurea Via



7,5x30	10 mm
Brass M70 027.890.1013.11620	MAT
Bronze M70 027.890.0815.11620	MAT
Gold M70 027.890.0189.11620	MAT
Gold Rose M70 027.890.1012.11620	MAT
Silver M70 027.890.0183.11620	MAT

## Aurea Floss



7,5x30	10 mm
Brass M70 027.890.1013.11621	MAT
Bronze M70 027.890.0815.11621	MAT
Gold M70 027.890.0189.11621	MAT
Gold Rose M70 027.890.1012.11621	MAT
Silver M70 027.890.0183.11621	MAT

## Dual

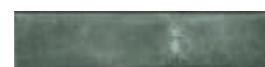


7,5x30	10 mm
Beige M70 027.890.0007.11745	MAT
Bianco M70 027.890.0150.11745	MAT
Grigio M70 027.890.0213.11745	MAT
Nero M70 027.890.0215.11745	MAT
Perla M70 027.890.0037.11745	MAT
Tortora M70 027.890.0297.11745	MAT
Oro Mate P14 028.231.0439.12170	MAT
Plata Mate P15 028.231.0438.12170	MAT

## Feel



7x28	9,5 mm
Pearl M78 015.889.0169.02772	GLO
Ocre M78 015.889.0052.02772	GLO
Terra M78 015.889.0056.02772	GLO
Turquoise M78 015.889.0339.02772	GLO



7x28	9,5 mm
Greige M78 015.889.0408.02772	GLO
Aqua M78 015.889.0498.02772	GLO
Olive M78 015.889.0973.02772	GLO

## Party



7x28	9,5 mm
Black M78 015.889.0157.11694	GLO
Blue M78 015.889.0111.11694	GLO
Brown M78 015.889.0109.11694	GLO
Grey M78 015.889.0161.11694	GLO
Pink M78 015.889.0305.11694	GLO
White M78 015.889.0108.11694	GLO

## Toscana



7x28	9,5 mm
Cotto M57 015.889.0154.02382	MAT
Siena M57 015.889.0053.02382	MAT
Mix M57 015.889.0100.02382	MAT

7x28

## Eleganza



7,5x30	10 mm
Beige M62 027.890.0007.11183	GLO
Bianco M62 027.890.0150.11183	GLO
Blu M62 027.890.0158.11183	GLO
Grigio M62 027.890.0213.11183	GLO
Perla M62 027.890.0037.11183	GLO

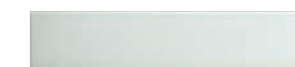


7,5x30	10 mm
Saggio M62 027.890.0942.11183	GLO
Siena M62 027.890.0053.11183	GLO
Terra M62 027.890.0056.11183	GLO

## Fresh



7,5x30	10 mm
Apple M70 027.890.0876.01929	MAT
Citric M70 027.890.1017.01929	MAT
Nut M70 027.890.0310.01929	MAT
Sky M70 027.890.0524.01929	MAT
White M70 027.890.0108.01929	MAT



7,5x30	10 mm
Mix Apple M70 027.890.0876.11713	MAT
Mix Citric M70 027.890.1017.11713	MAT
Mix Nut M70 027.890.0310.11713	MAT
Mix Sky M70 027.890.0524.11713	MAT

7x28

## Brickwall



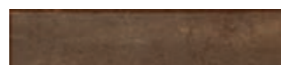
7x28	9,5 mm
Blanco M57 015.889.0012.02961	MAT
Perla M57 015.889.0037.02961	MAT
Sand M57 015.889.0119.02961	MAT
Tortora M57 015.889.0297.02961	MAT
Grafito M57 015.889.0068.02961	MAT
Negro M57 015.889.0003.02961	MAT
Cotto M57 015.889.0154.02961	MAT

## Slate way

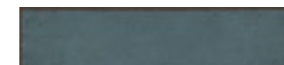


7x28	9,5 mm
Ash M57 015.889.0344.11381	MAT
Brown M57 015.889.0109.11381	MAT
Green M57 015.889.0110.11381	MAT
Ocean M57 015.889.0171.11381	MAT
Pearl M57 015.889.0169.11381	MAT

## Alloy



7,5x30	10 mm
Azzurro M62 027.890.0151.10476	MAT
Coal M62 027.890.0298.10476	MAT
Copper M62 027.890.0287.10476	MAT
Grey M62 027.890.0161.10476	MAT



7,5x30	10 mm
Mint M62 027.890.0824.10476	MAT
Pearl M62 027.890.0169.10476	MAT

7,5x30

## Grace



7,5x30	10 mm
Aqua M62 027.890.0498.02769	GLO
Blue M62 027.890.0111.02769	GLO
Bone M62 027.890.0413.02769	GLO
Brown M62 027.890.0109.02769	GLO



7,5x30	10 mm
Gold M62 027.890.0189.02769	GLO
Green M62 027.890.0110.02769	GLO
Nude M62 027.890.0383.02769	GLO
Ocre M62 027.890.0052.02769	GLO
Taupe M62 027.890.0285.02769	GLO

## Lincoln M



7,5x30	10 mm
Cream M62 027.890.0163.10092	MAT
White M62 027.890.0108.10092	MAT

## Mayolica



**7,5x30** ▼ 10 mm

● Artico	M62 027.890.0393.01518	
● Blanco	M62 027.890.0012.01518	
● Blanco Mate	M62 027.890.0174.01518	
● Beige	M62 027.890.0007.01518	
● Celeste	M62 027.890.0055.01518	
● Menta	M62 027.890.0548.01518	



**7,5x30** ▼ 10 mm

● Negro	M62 027.890.0003.01518	
● Negro Mate	M62 027.890.1011.01518	
● Nude	M62 027.890.0383.01518	
● Perla	M62 027.890.0037.01518	
● Tortora	M62 027.890.0297.01518	
● Turquesa	M62 027.890.0027.01518	

## Mayolica Rust



**7,5x30** ▼ 10 mm

● Beige	M62 027.890.0007.11615	
● Blanco	M62 027.890.0012.11615	
● Celeste	M62 027.890.0055.11615	
● Menta	M62 027.890.0548.11615	
● Nude	M62 027.890.0383.11615	



**7,5x30** ▼ 10 mm

● Perla	M62 027.890.0037.11615	
● Tortora	M62 027.890.0297.11615	

7,5x30

## Spring



**7,5x30** ▼ 10 mm

● Azul	M62 027.890.0004.11486	
● Blanco	M62 027.890.0012.11486	
● Blanco Mate	M62 027.890.0174.11486	
● Beige	M62 027.890.0007.11486	
● Carmin	M62 027.890.0195.11486	
● Gris	M62 027.890.0002.11486	



**7,5x30** ▼ 10 mm

● Negro	M62 027.890.0003.11486	
● Negro Mate	M62 027.890.1011.11486	
● Ocre	M62 027.890.0052.11486	
● Perla	M62 027.890.0037.11486	
● Tortora	M62 027.890.0297.11486	
● Verde	M62 027.890.0005.11486	

## Torano M



**7,5x30** ▼ 10 mm

● Dorado	M62 027.890.0103.10106	
----------	------------------------	--

## Lincoln M

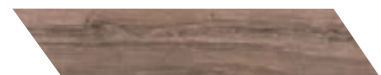


**8x40** ▼ 8,5 mm

● Cream	M106 015.223.0163.10092	
● White	M106 015.223.0108.10092	

8x40

## Rovere



**8x40** ▼ 8,5 mm

● Honey	M106 015.223.0358.09741	
● Bark	M106 015.223.0476.09741	
● Brown	M106 015.223.0109.09741	
● Desert	M106 015.223.0364.09741	

## Oldmanor



**8x40** ▼ 8,5 mm

● Ambar	M106 015.223.0126.01406	
● Arena	M106 015.223.0017.01406	
● Nacar	M106 015.223.0030.01406	
● Tabaco	M106 015.223.0113.01406	

## Torano M



**8x40** ▼ 8,5 mm

● Dorado	M106 015.223.0103.10106	
----------	-------------------------	--

## Toscana



**8x40** ▼ 8,5 mm

● Cotto	M106 015.223.0154.02382	
● Siena	M106 015.223.0053.02382	
● Mix	M106 015.223.0100.02382	

8x40

## Oldmanor



**8x44,2** ▼ 8,5 mm

● Nacar	M70 015.681.0030.01406	
● Ambar	M70 015.681.0126.01406	
● Tabaco	M70 015.681.0113.01406	
● Arena	M70 015.681.0017.01406	

## Rovere



**8x44,2** ▼ 8,5 mm

● Honey	M70 015.681.0358.09741	
● Bark	M70 015.681.0476.09741	
● Brown	M70 015.681.0109.09741	
● Desert	M70 015.681.0364.09741	

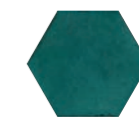
8x44,2

## Grace



**13x15 Hex** ▼ 8,5 mm

● Aqua	M134 015.056.0498.02769	
● Blue	M134 015.056.0111.02769	
● Bone	M134 015.056.0413.02769	
● Brown	M134 015.056.0109.02769	
● Gold	M134 015.056.0189.02769	

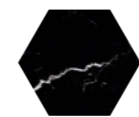


**13x15 Hex** ▼ 8,5 mm

● Green	M134 015.056.0110.02769	
● Nude	M134 015.056.0383.02769	
● Ocre	M134 015.056.0052.02769	
● Taupe	M134 015.056.0285.02769	

13x15

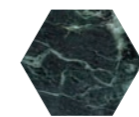
## Hexa Deva



**13x15 Hex**

● Nero	M134 015.056.0215.12226	
--------	-------------------------	--

## Hexa Euphoria



**13x15 Hex**

● Green	M134 015.056.0110.12221	
---------	-------------------------	--

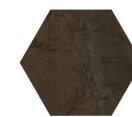
## Hexa Grotta



**13x15 Hex**

● Oro	M134 015.056.0032.12227	
-------	-------------------------	--

## Hexa Jatobà



**13x15 Hex**

● Brown	M134 015.056.0109.12228	
---------	-------------------------	--

13x15

## Hexa Laurants



**13x15 Hex**

● Brown	M134 015.056.0109.12222	
---------	-------------------------	--

## Hexa Nebula



**13x15 Hex**

● Almond	M134 015.056.0097.12223	
----------	-------------------------	--

## Hexa Pisa



**13x15 Hex**

● Gold	M134 015.056.0189.12224	
--------	-------------------------	--

## Hexa Torano

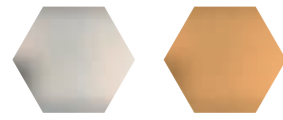


**13x15 Hex**

● Dorado	M134 015.056.0103.12225	
----------	-------------------------	--

13x15

### Golden Hexa



#### 13x15 Golden Hexa

- Plata Mate M134 025.956.0438.12244
- Oro Mate M134 025.956.0439.12244

15x15

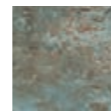
### Feel



#### 15x15

- Pearl M118 015.315.0169.02772
- Ocre M118 015.315.0052.02772
- Terra M118 015.315.0056.02772
- Turquoise M118 015.315.0339.02772
- Greige M118 015.315.0408.02772
- Aqua M118 015.315.0498.02772
- Olive M118 015.315.0973.02772

### Slate Way



#### 15x15

- Ash M110 015.315.0344.11381
- Brown M110 015.315.0109.11381
- Green M110 015.315.0110.11381
- Ocean M110 015.315.0171.11381
- Pearl M110 015.315.0169.11381

20,4x20,4

### Alloy



#### 20,4x20,4

- Azzurro M76 015.921.0151.10476
- Coal M76 015.921.0298.10476
- Copper M76 015.921.0287.10476
- Grey M76 015.921.0161.10476
- Mint M76 015.921.0824.10476
- Pearl M76 015.921.0169.10476

### Art



#### 22,3x22,3

- Blanco M68 015.826.0012.00497
- Gris M68 015.826.0002.00497
- Marengo M68 015.826.0028.00497

### Art Cassat



#### 22,3x22,3

- Cassat M68 015.826.0001.00481

22,3x22,3

### Art Lepic



#### 22,3x22,3

- Lepic M68 015.826.0001.00484

### Art Monet



#### 22,3x22,3

- Monet M68 015.826.0001.02600

### Art Renoir



#### 22,3x22,3

- Renoir M68 015.826.0001.02604

### Art Rodin



#### 22,3x22,3

- Rodin M68 015.826.0001.02602

22,3x22,3

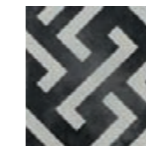
### Art Seurat



#### 22,3x22,3

- Seurat M68 015.826.0001.00483

### Art Signac



#### 22,3x22,3

- Signac M68 015.826.0001.00482

### Art Sysley



#### 22,3x22,3

- Sysley M68 015.826.0001.02603

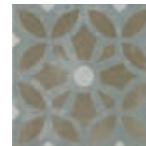
### Dc. Corbusier



#### 22,3x22,3

- Corbusier M68 015.826.0001.00331

### Art Cezzane



#### 22,3x22,3

- Cezzane M68 015.826.0001.00495

### Art Corot



#### 22,3x22,3

- Corot M68 015.826.0001.00487

### Art Degas



#### 22,3x22,3

- Blanco M68 015.826.0012.02601
- Negro M68 015.826.0003.02601

### Art Gauguin



#### 22,3x22,3

- Gauguin M68 015.826.0001.00486

### Dc. Erte



#### 22,3x22,3

- Negro M68 015.826.0003.00325
- Blanco M68 015.826.0012.00325

### Dc. Dunant



#### 22,3x22,3

- Dunant M68 015.826.0001.00344

### Dc. Fontana



#### 22,3x22,3

- Rojo M68 015.826.0008.00349
- Oro M68 015.826.0032.00349

### Dc. Hofer



#### 22,3x22,3

- Hofer M68 015.826.0001.00341

Códigos de producto  
Product codes / Codes des produits

22,3x22,3

Dc. Horta



22,3x22,3

11 mm

● Horta M68 015.826.0001.00339

Dc. Icart



22,3x22,3

11 mm

● Icart M68 015.826.0001.00337

Dc. Klee



22,3x22,3

11 mm

● Klee M68 015.826.0001.00334

Dc. Lawrie



22,3x22,3

11 mm

● Lawrie M68 015.826.0001.00340

Dc. Lempicka

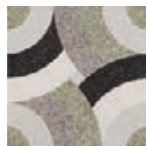


22,3x22,3

11 mm

● Lempicka M68 015.826.0001.00332

Dc. Moser



22,3x22,3

11 mm

● Moser M68 015.826.0001.00346

Dc. Munch

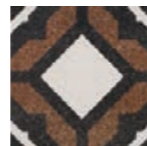


22,3x22,3

11 mm

● Moser M68 015.826.0001.00342

Dc. Nolde

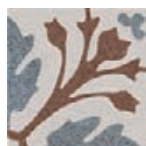


22,3x22,3

11 mm

● Nolde M68 015.826.0001.00333

Dc. Preiss

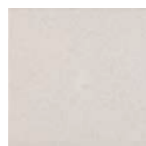


22,3x22,3

11 mm

● Preiss M68 015.826.0001.00343

Deco



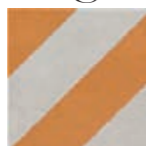
22,3x22,3

11 mm

● Blanco M68 015.826.0012.00582

● Negro M68 015.826.0003.00582

Diagonals



22,3x22,3

11 mm

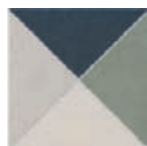
● Ocre M68 015.826.0052.07408

● Navi M68 015.826.0118.07408

● Ash M68 015.826.0344.07408

● Sage M68 015.826.0346.07408

Diamond



22,3x22,3

11 mm

● Ocre M68 015.826.0052.07410

● Navi M68 015.826.0118.07410

● Sage M68 015.826.0346.07410

22,3x22,3

Empoli



22,3x22,3

11 mm

● Aquamarine M68 015.826.0377.09793

● Earth M68 015.826.0469.09793

● Skyblu M68 015.826.0379.09793

Lambeth



22,3x22,3

11 mm

● Cement M68 015.826.0418.01904

● Natural M68 015.826.0102.01904

Senesi



22,3x22,3

11 mm

● Copper M68 015.826.0287.09792

● Ferro M68 015.826.0508.09792

Sloane



22,3x22,3

11 mm

● Cement M68 015.826.0418.01913

19,8x22,8

Kingsbury



19,8x22,8 Hex

10 mm

● Blanco M90 015.292.0012.01761

● Grafito M90 015.292.0068.01761

● Grana M90 015.292.0021.01761

● Navi M90 015.292.0118.01761

● Negro M90 015.292.0003.01761

● Vert M90 015.292.0543.01761

● Ocre M90 015.292.0052.01761

Lambeth



19,8x22,8

10 mm

● Cement M90 015.292.0418.01904

● Natural M90 015.292.0102.01904

Mayfair



19,8x22,8 Hex

10 mm

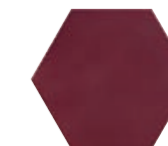
● Beige M90 015.292.0007.01955

● Blanco M90 015.292.0012.01955

● Grafito M90 015.292.0068.01955

● Grana M90 015.292.0021.01955

● Gris M90 015.292.0002.01955



19,8x22,8 Hex

10 mm

● Navi M90 015.292.0118.01955

● Negro M90 015.292.0003.01955

● Ocre M90 015.292.0052.01955

● Perla M90 015.292.0037.01955

● Tortora M90 015.292.0297.01955

● Vert M90 015.292.0543.01955

Lincoln M



19,8x22,8

10 mm

● Cream M90 015.292.0163.10092

● White M90 015.292.0108.10092

Oldmanor



19,8x22,8

10 mm

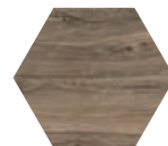
● Tabaco M90 015.292.0113.01406

● Nacar M90 015.292.0030.01406

● Arena M90 015.292.0017.01406

● Ambar M90 015.292.0126.01406

Rovere



19,8x22,8

10 mm

● Honey M90 015.292.0358.09741

● Bark M90 015.292.0476.09741

● Brown M90 015.292.0109.09741

● Desert M90 015.292.0364.09741

Sloane



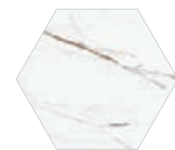
19,8x22,8

10 mm

● Cement M90 015.292.0418.01913

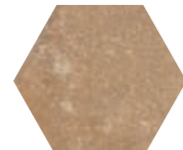
Códigos de producto  
Product codes / Codes des produits

19,8x22,8  
Torano M



19,8x22,8  
10 mm  
● Dorado M90 015.292.0103.10106

25,8x29  
Toscana



25,8x29 Hex  
11 mm  
● Cotto M80 015.122.0154.02382  
● Siena M80 015.122.0053.02382  
● Mix M80 015.122.0100.02382

1,2x30  
Trim



1,2x30 Basic  
● Beige P13 028.125.0007.11798  
● Blanco P13 028.125.0012.11798  
● Blanco Mate P13 028.125.0174.11798  
● Gris P13 028.125.0002.11798  
● Negro P13 028.125.0003.11798  
● Negro Mate P13 028.125.1011.11798  
● Perla P13 028.125.0037.11798  
● Tortora P13 028.125.0297.11798

1,2x30  
Trim



1,2x30 Eleganza  
● Beige P15 028.125.0007.11183  
● Perla P15 028.125.0037.11183  
● Siena P15 028.125.0053.11183  
● Terra P15 028.125.0056.11183  
● Bianco P15 028.125.0150.11183  
● Blu P15 028.125.0158.11183  
● Grigio P15 028.125.0213.11183  
● Saggio P15 028.125.0942.11183

1,5x20  
Trim



1,5x20 Mayfair

● Beige P07 028.475.0007.01955  
● Blanco P07 028.475.0012.01955  
● Blanco Mate P07 028.475.0174.01955  
● Gris P07 028.475.0002.01955  
● Negro P07 028.475.0003.01955  
● Negro Mate P07 028.475.1011.01955  
● Perla P07 028.475.0037.01955  
● Tortora P07 028.475.0297.01955

Empaquetado  
Packaging/Emballage

Formato	pz/cj	m²/cj	cj/pl	m²/pl	kg/cj	kg/pl
13x15 Hex	24	0.31	104	32.24	6.25	670.00
15x15	20	0.45	108	48.60	8.60	948.80
20,4x20,4	25	1.04	45	46.80	22.80	1.046.00
19,8x22,8 Hex	24	0.84	48	40.32	18.00	884.00
25,8x29 Hex	18	1.00	48	48.00	22.50	1,100.00
22,3x22,3	20	1.00	45	45.00	24.00	1,100.00
6,5x20	27	0.35	143	50.05	6.85	999.55
7,5x15	44	0.50	120	60.00	8.00	980.00
7,5x30	25	0.56	121	67.76	9.00	1,109.00
7x28	27	0.53	121	64.13	10.70	1,314.70
8x40	30	0.96	65	62.40	16.63	1,100.95
1,2x30	45	-	-	-	1.85	-
1,5x20	30	-	-	-	1.20	-



Características técnicas  
Technical features  
Caractéristiques techniques

COMPACGLASS  
GRES PORCELÁNICO ESMALTADO  
GLAZED PORCELAIN TILES  
GRÈS CÉRAMÉ ÉMAILLÉ

	GRUPO Bla (GL) Absorción de agua < 0,5% GROUP Bla (GL) Water absorption < 0,5% GROUPE Bla (GL) Absorption d'eau < 0,5%	NORMAS DE ENSAYO STANDARD NORMES D'ESSAI	VALORES PRESCRITOS NORMA EN 14411 VALUE REQUIRED BY EN 14411 STANDARD VALEURS PRESCRITES NORME EN 14411	VALOR MEDIO AVERAGE VALUE VALEUR MOYENNE
Características dimensionales Dimensional features Caractéristiques dimensionnelles		ISO 10545-2		Cumple la norma Conforms to standard Satisfait à la norme
Absorción de agua Water absorption Absorption d'eau		ISO 10545-3	< 0,5%	0,1%
Resistencia a la flexión Modulus of rupture Résistance à la flexion	Fuerza de rotura Breaking strength Force de rupture	ISO 10545-4	> 35 N/mm2 > 1300 N	35 - 45 N/mm2 1600-2400 N
Resistencia a la abrasión superficial Resistance to surface abrasion Résistance à l'abrasion de surface		ISO 10545-7	Clase indicada por el fabricante Abrasion class indicated by the manufacturer Classe indiquée par le fabricant	Según Modelos According to models Selon modèles
Dilatación térmica lineal Linear thermal expansion Dilatation thermique linéaire		ISO 10545-8	Método de ensayo disponible Test method available Méthode d'essai disponible	<7,0 x 10 <sup>-6</sup> °C-1
Resistencia al choque térmico Thermal shock resistance Résistance au choc thermique		ISO 10545-9	Método de ensayo disponible Test method available Méthode d'essai disponible	Resiste Resists Résiste
Resistencia al cuarteo Crazing resistance Résistance au tressailage		ISO 10545-11	Exigida Required Exigée	Resiste Resists Résiste
Resistencia a la helada Frost resistance Résistance au gel		ISO 10545-12	Método de ensayo disponible Test method available	Resiste Resists Résiste
Resistencia química Chemical resistance Résistance chimique	Ácidos y bases Acids and bases Acides et bases Productos de limpieza y reactivos de piscinas Cleaning products and pool reactive agents Produits de nettoyage et réactifs de piscines	ISO 10545-13	Método de ensayo disponible Test method available Méthode d'essai disponible Mínimo GB Minimum GB Minimum GB	Cumple la norma Conforms to standard Satisfait à la norme Clase GA Class GA Classe GA
Resistencia a las manchas Resistance to stains Résistance aux taches		ISO 10545-14	Mínimo clase 3 Minimum class 3 Minimum classe 3	Cumple la norma Conforms to standard Satisfait à la norme

Fachadas Edificios /  
Façade










Residenciales /  
Residential

# Características técnicas

## Technical features

### Caractéristiques techniques

**PASTABLANCA**  
 RVTO. PASTA BLANCA MONOPOROSA  
 WHITE BODY WALL TILES MONOPOROSA  
 REVÊTEMENT PÂTE BLANCHE

	GRUPO BIII (GL) Absorción de agua > 10% GROUP BIII (GL) Water absorption > 10% GROUPE BIII (GL) Absorption d'eau > 10%	NORMAS DE ENSAYO STANDARD NORMES D'ESSAI	VALORES PRESCRITOS NORMA EN 14411 VALUE REQUIRED BY EN 14411 STANDARD VALEURS PRESCRITES NORME EN 14411	VALOR MEDIO AVERAGE VALUE VALEUR MOYENNE
	Características dimensionales Dimensional features / Caractéristiques dimensionnelles	ISO 10545-2		Cumple la norma Conforms to standard Satisfait à la norme
	Absorción de agua Water absorption / Absorption d'eau	ISO 10545-3	> 10%	16%
	Resistencia a la flexión Modulus of rupture Résistance à la flexion	ISO 10545-4	> 12 N / mm <sup>2</sup> > 600 N	20 - 30 N / mm <sup>2</sup> 700 - 1000 N
	Resistencia a la abrasión superficial Resistance to surface abrasion / Résistance à l'abrasion de surface	ISO 10545-7	Clase indicada por el fabricante Abrasion class indicated by the manufacturer / Classe indiquée par le fabricant	No aplica Not apply Non applicable
	Dilatación térmica lineal Linear thermal expansion / Dilatation thermique linéaire	ISO 10545-8	Método de ensayo disponible Test method available Méthode d'essai disponible	<7,0 x 10 <sup>-6</sup> °C <sup>-1</sup>
	Resistencia al choque térmico Thermal shock resistance / Résistance au choc thermique	ISO 10545-9	Método de ensayo disponible Test method available Méthode d'essai disponible	Resiste Resists Résiste
	Resistencia al cuarteo Crazing resistance / Résistance au tressailage	ISO 10545-11	Exigida Required Exigée	Resiste Resists Résiste
	Resistencia química Chemical resistance Résistance chimique	ISO 10545-13	Método de ensayo disponible Test method available Méthode d'essai disponible Mínimo GB Minimum GB Minimum GB	Cumple la norma Conforms to standard Satisfait à la norme  Clase GA Class GA Classe GA
	Resistencia a las manchas Resistance to stains / Résistance aux taches	ISO 10545-14	Mínimo clase 3 Minimum class 3 Minimum classe 3	Cumple la norma Conforms to standard Satisfait à la norme



Rvto. / Wall / Rvtml.: Feel Terra 15x15 / Feel Greige 15x15  
 Pvto. / Floor / Sol: Mosel Ash 60x60